



Functional Supply Point (FSP)

Railway Signalling Power Supplies



B&F is Link-Up approved
ID No. 19787.

Product Range:

B&F supply a range of products and services to the Rail industry. These are proven in use, and where appropriate, Network Rail approved.

Applications:

B&F FSP's are designed and packaged to suit the individual needs of each project and size. These units comprise of various arrangements of switchgear and other electrical components, mounted within an approved stainless steel trackside enclosure.

Product Highlights:

Numerous options are available, including:-

- * Units for 400VAC 3P, 650VAC 1P, or 650VAC 3P
- * Units with or without 400V/110V or 650V/110V signalling transformers
- * Units with provision for, and without, Automatic Reconfiguration Devices (ARD); e.g. B&F SCION, or similar units, with UPS.

Further benefits:

B&F PSP's & FSP's:-

- * Meet Network Rail approved design specifications, including:- NR/GN/ELP/00015 & NR/SP/ELP/27243
- * Are readily maintained with a high degree of operational safety
- * Provide high plant integrity and reliability of service
- * Designed & Tested to BS EN 60439.1.



Telephone.
+44 (0) 114 286 6000

Facsimile.
+44 (0) 114 286 6059

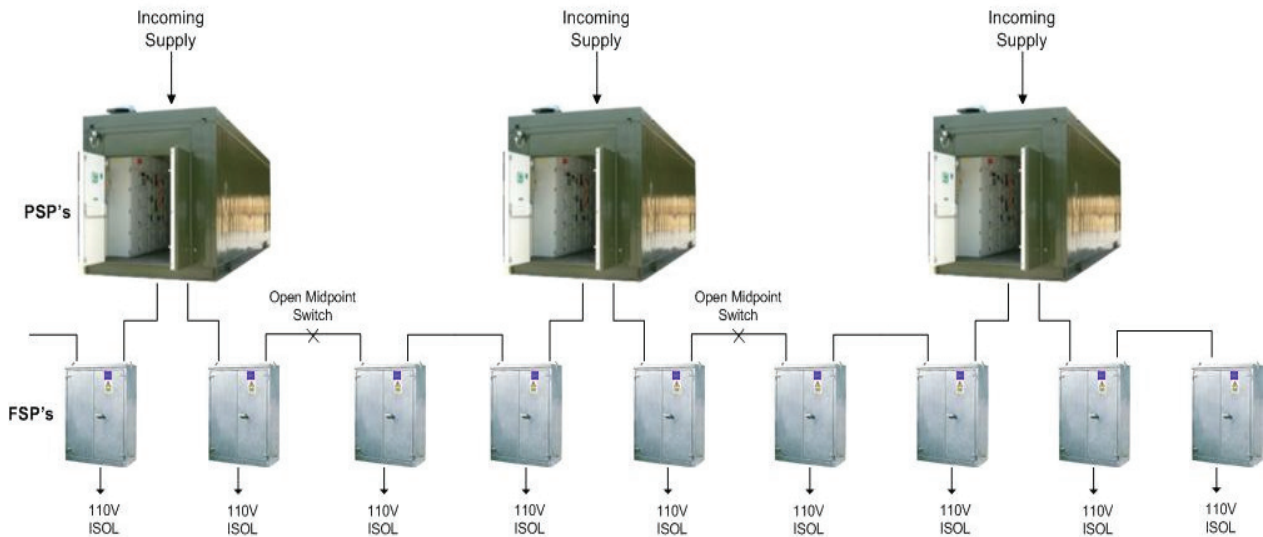
Email.
sales@baldwinandfrancis.com

Address.
President Way, President Park, Sheffield, S4 7UR United Kingdom



Functional Supply Point (FSP) Kiosk

Dual End Feed Arrangement of PSP's / FSP's



Numerous FSP's may be supplied by each PSP - this simplified diagram showing up to 4 FSP's, is for illustrative purposes only.

Typical FSP Configuration

