



Multivac Range of Medium Voltage (MV) Switchgear



Product Range:

B&F Multivac range includes Fused vacuum Contactor Motor Starters, Feeders, Circuit Breakers, and Local Isolators

Applications:

These MV switchboards are designed with built-in flexibility, and are suitable for a range of power generation & process industry applications, including: - Motor Starters, Transformer Feeders, and Capacitor Feeders.

Product Highlights:

- * Metal-enclosed Multivac range incorporates many safety and serviceability design features
- * Arc Fault Containment
- * All-welded enclosures fabricated from 2.5mm sheet steel

Further Benefits:

- * Flexible modular design
- * Full mechanical interlocking of compartment door including withdrawable fused truck & earthing switch
- * Ingress Protection - IP42 as standard - higher ratings available
- * High plant integrity & reliability
- * Full compliance with IEC Standards.

Paint Finish:

- * BS4800 / BS381 or RAL





Telephone.
+44 (0) 114 286 6000

Facsimile.
+44 (0) 114 286 6059

Email.
sales@baldwinandfrancis.com

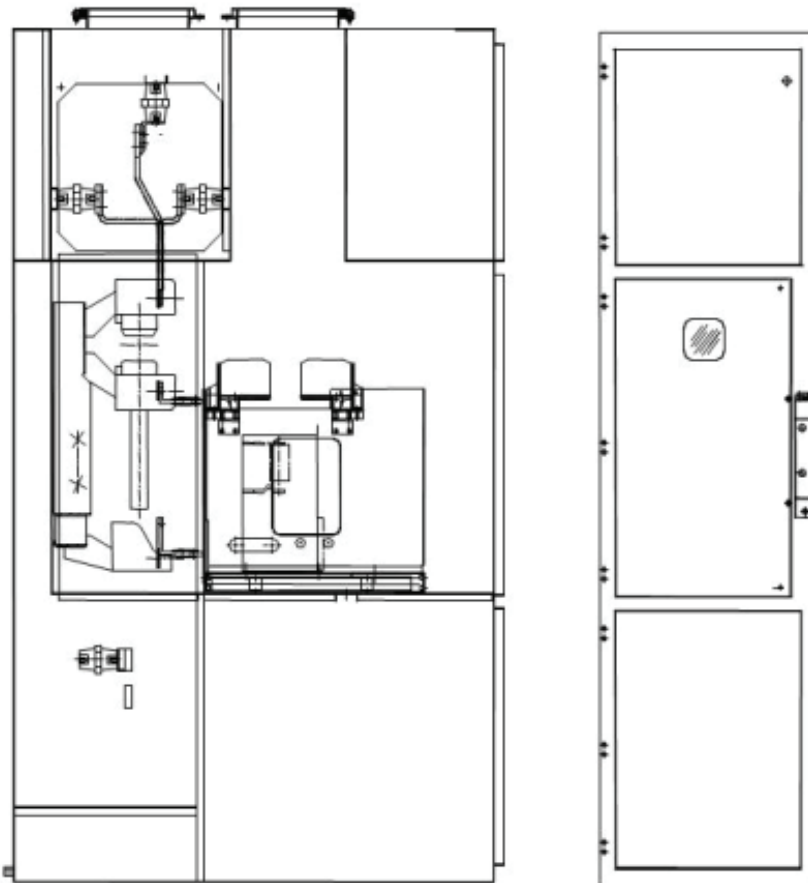
Address.
President Way, President Park, Sheffield, S4 7UR United Kingdom

Multivac-MS

MV Fused Vacuum Contactor Motor Starter

Technical Data:

Ratings (Standard)	3.6kV	7.2kV	12kV
Motors	1,500kW	3,000kW	2,250kW
Transformers	2,000kVA	3,600kVA	2,300kVA
Higher ratings (On Request)			
Motors	2,000kW	3,400kW	
Transformers	2,500kVA		



Dimensions (in mm):	Width	Depth	Height
3.6kV / 7.2kV	600	1,300	2,300
12kV	750	1,300	2,300
Optional Cable Box		300	